



# Hydrometallurgical Pilot Plant

Hydrometallurgical Lab · Pyrometallurgical Lab · Modelling ·  
**Hydro/Pyro Pilot Plant** · Engineering Support



## Hydrometallurgical Pilot Plant

The pilot plant located at the XPS Centre in Sudbury houses larger scale hydrometallurgical equipment such as a Pressure Acid Leach (PAL) circuit, 6 stage CCD circuit, multi-stage atmospheric leach circuits and a distillation column, which are all linked to an **extensive process control** system. It is skid-mounted and can be used for extended 24/7 pilot plant campaigns in Sudbury or at the client's site (**equipment rental**).

Below a general overview of the pilot plant at the XPS Centre.



## Key Capabilities...

**Pressure Acid Leach** circuit; 6 compartments, titanium autoclave with 96 litres effective volume.



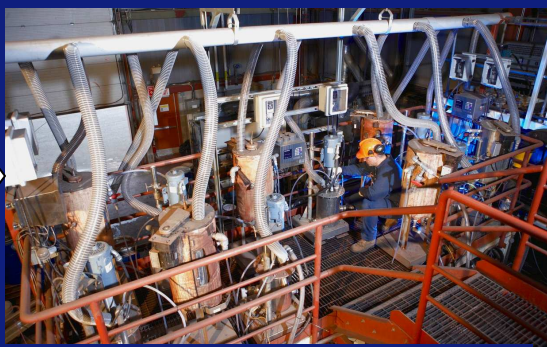
Design, construction and commissioning of a 180 kg/hr slurry feed rate stainless steel 5 stage aerated ammonia leach skid combined with 5 stage CCD circuit with external feed wells.



**Flow sheet Simulation:** An example of our flow sheet integration capabilities is shown below. The product from a 4 stage leach circuit is fed to a 6 stage CCD circuit to be washed and thickened. The tailings and PLS from the ammonia leach circuit are then distilled to produce clean waste for disposal and a crystalline saleable product. Other chemistry and equipment applications are of course possible.



**Leach Skid:** 4-stage atmospheric leach in either 316 SS or Ti-2 tanks (~15 Liters)



**CCD Circuit (Ti):** 6 stage CCD circuit (~20 Liters) entirely made from Ti-2 or PVDF.



**Distillation column:** 15 stages – Max. feed ~180 kg/hr of liquid

## Contact Us...

[Address] Xstrata Process Support Group, 6 Edison Road, Falconbridge, Ontario, P0M 1S0, Canada  
[Phone] +1 (705) 699 3400 [Fax] +1 (705) 699 3431 [E-Mail] [extractive@xstrataprocessupport.ca](mailto:extractive@xstrataprocessupport.ca)

